



SUPERABRASIVES

CBN AND DIAMOND PRODUCTS

MAXIMIZER VITRIFIED CBN FORM WHEEL GRINDING – Gear Teeth

For over 30 years, SuperAbrasives has focused on providing our customers with top quality, high performance products all while delivering a high level of responsiveness and customer service. We pride ourselves on our Continuous Improvement Program and effectively providing our customers with the most cost-efficient solutions for the job.

What can we do for your business? Help bring your grinding processes to the next level while lowering your grinding costs!

MAXIMIZER CBN VITRIFIED PRODUCTS

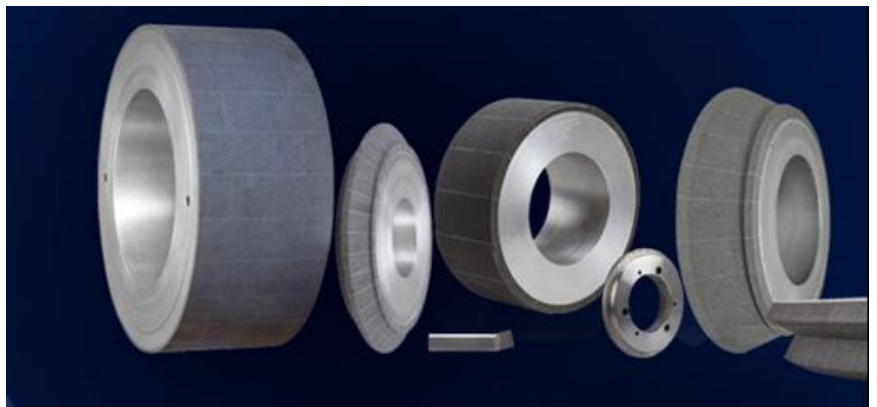
The Maximizer product line includes vitrified CBN grinding wheels designed for use in both rotary and single point technology dressing applications. The unique characteristics of this bond structure produce a product that is flexible and versatile allowing for seamless integration into Job Shop, Tool Room and Production run environments.

TECHNICAL SUPPORT AND CUSTOM SERVICES

Application Support for Gear Grinding

At SuperAbrasives we also provide application support to our customers by working with you to optimize your grinding process. We use the following steps to walk through your applications to achieve the success you require.

- Application Evaluation
- Application Analysis
- Application Recommendations
- Product Development
- Product Implementation



If you would like to learn more, please call our Application Specialists at 248-348-7670 or email us at sales@superabrasives.com.





SUPERABRASIVES

CBN AND DIAMOND PRODUCTS

MAXIMIZER VITRIFIED CBN FOR GEAR GRINDING (HARD GEAR/SINGLE FLANK)

GEAR GRIND APPLICATION (HARD GEAR/SINGLE FLANK)

Machine: Niles ZE1200

Material: 8620 Steel

Stock: .0185" / Flank

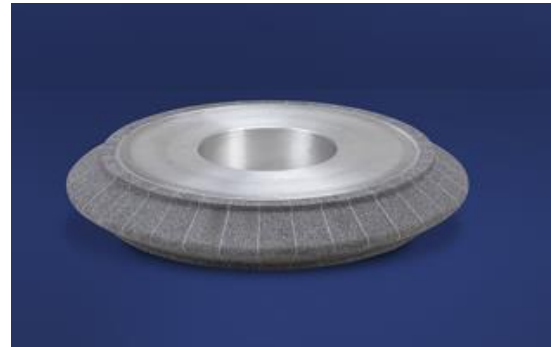
Gear Width: 6.5"

Gaps: 17 (34 Flanks)

Wheel Size: 10.9 x 1.2 x 5" 1A1

Wheel Cutting Speed: 5,433 SFPM (Conventional) & 4,252 SFPM (SuperAbrasives)

Coolant: Straight Oil



TOOL LIFE OF INCUMBENT WHEEL VS SUPERABRASIVES WHEEL:

<u>PARAMETERS</u>	INCUMBENT WHEEL	<u>SUPERABRASIVES WHEEL</u>
Parts/Gaps per dress	9 Flanks (4.5 Gaps)	14 Gap
Total Parts per Wheel	471	833
Cycle Time	32 minutes	13.6 minutes

ADDITIONAL SAVINGS:

- **Cost Savings per 3 Shift Day: \$300.00**

